

# CLEAN CARE

## SOLUTION FOR COOLING CHANNEL MAINTENANCE

**Cleancare** is the result of decades of experience in the industry & trade sector. Reliable and easy to use, it is a **fully automated device for the cleaning of water channels**. CleanCare removes rust, limescale and other deposits from water systems. The machine cleaning process is powered by compressed air only.

Benefit from a huge increase in performance, comprehensive cost reduction and first-class service.

### Benefits:

- COMPREHENSIVE CLEANING**  
 Rust, lime and other deposits are removed from your water-bearing systems, tools and machines.
- QUALITY AND PERFORMANCE IMPROVEMENT**  
 After cleaning, you will notice a significant difference in the quality, efficiency and performance of your systems.
- WEAR AND TEAR AND REPAIR MINIMIZATION**  
 Reduced wear on your machines, less maintenance, minimized production downtime and lower repair costs.
- ENERGY COST SAVINGS**  
 You will achieve a significantly lower energy resource consumption with the CleanCare.
- SIMPLIFIED OPERATIONS**  
 Reduced number of control elements for even more intuitive handling.
- 2-STAGE FILTRATION**  
 Designed to optimize filtration efficiency and effectively capture particulate residues through sequential filtration stages.



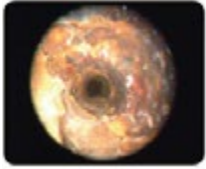
### Fields of application:

- Injection moulding machines
- Injection moulding tools
- Temperature control units
- Cooling circuits

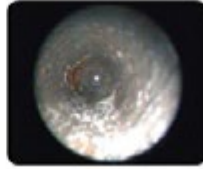
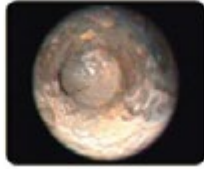
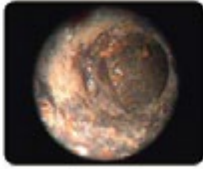
### TOUCHSCREEN DISPLAY



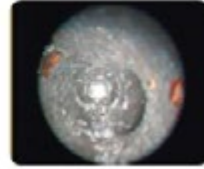
## VERIFIED IMPROVEMENTS IN THE LEVEL OF EFFICIENCY



Before



5 hour operating time



After

## BASIC FEATURES

- Single rinse of operating cycles
- Leakage test of operating cycles
- Single operation with compressed air
- Low-maintenance and robust membrane pump
- Large smooth-running wheels
- Large tanks for rinsing / preserving
- Flow can reversed with the turn of a dial

## TECHNOLOGY FEATURES

- USB port for saving the cleaning protocol
- Simple to perform software updates
- Backlit colour touch display
- Continuous pH measurement of the rinse water cycle
- Direct flow measurement of the rinse water cycle
- Touch screen display shows all data
- Saves relevant protocol data on a USB stick
- Integrated rechargeable batteries
- Operation independent of power supply
- Integrated, Wi-Fi & Bluetooth

## SIZE AND WEIGHT

Size: **530** (width) x **1250** (height) x **700** (depth) mm

## PERFORMANCE CHARACTERISTICS

- Max. flow rate: 24 l / min
- Feed pressure: 6 bar
- Max. drive pressure: 6 bar
- Cleaning tank capacity: 80 l
- Preservation tank capacity: approx. 18 l
- Filter mesh size: 60 - 350 µm
- Sound level 72 +-3 dBA at 1m distance
- Connection: 2 flow & 2 return lines (1/2" BSP female)

## ELECTRICAL CONNECTION

- Power supply: 230V/ 50Hz
- Power consumption: max. 50 VA

CleanCare	Basic features	Automation	pH-measurement	Flux measurement	Separate preservation tank
CCA-NG7000S	✓	✓	✓	✓	✓

## AVAILABLE CHEMICALS

REF	Description
CCA-P0010	High performance descaler 15 l container
CCA-P0010-BIO	High performance descaler - BIO 15 l container
CCA-P0020	Neutralisator

REF	Description
CCA-P0030	Complexing agent and corrosion protection
CCA-P0030-BF	Complexing agent and corrosion protection - boron free
CCA-P0050	Cleaning agent removes oil contamination