



MANIFOLDS FOR TEMPERATURE REGULATION LINES

- ▶ **Optimizing Cooling Times**
- ▶ **Enhancing Safety**
- ▶ **Saving Energy**

Materials & Construction

- Manufactured from anodised aluminium (blue or red) or stainless steel 1.4301
- Plain end plug: brass MS 58, nickel-plated
- Modular bar connector system allows unlimited extensions and combinations

Design & Application

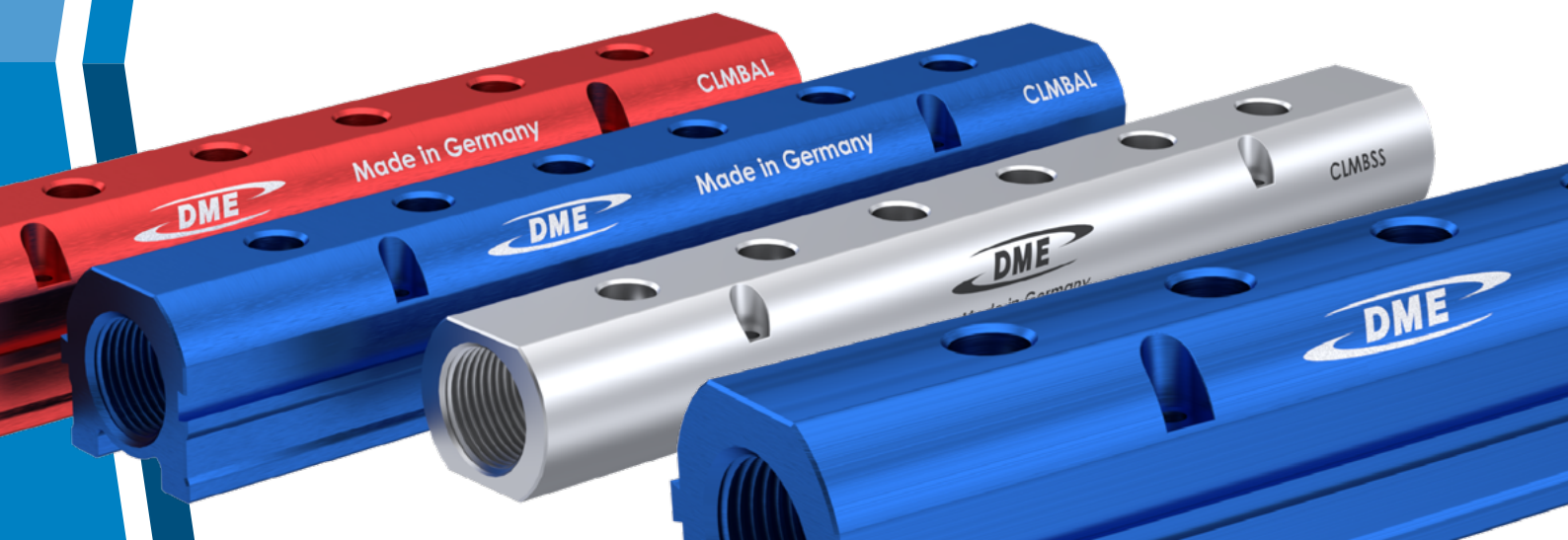
- Centralised inflow/outflow for efficient temperature regulation to the mould tool
- Multiple outlet configurations available to match specific tool requirements
- Clean, organized layout improves production safety and reduces hose clutter
- Suitable for machine-mounted installation
- Stainless steel versions recommended for aggressive media applications

Technical Specifications

- Lateral inlet thread: G 3/4 f
- Top outlet thread: G 1/4 or G 3/8 f (for coupling series DN 6 and DN 9)
- Available in single and double configurations
- Can be installed both horizontally and vertically

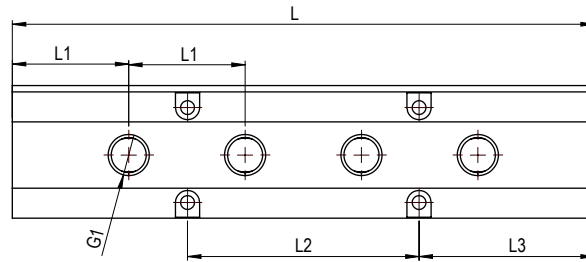
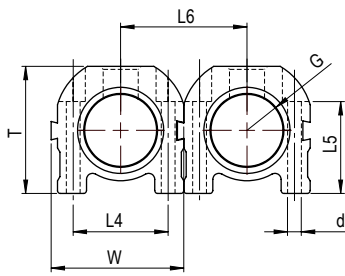
Key Benefits

- Reduced pressure loss by minimizing long hoses and excess flow meters
- Efficient parallel mould cooling for shorter cycle times
- Easy grouping and installation of cooling connections and hoses
- Separate connection of inlets and outlets possible
- Shorter hose lengths enable lower system pressure operation



ALUMINIUM-KÜHLVERTEILER

CLMBAL



Mat.: Aluminium eloxiert
Drück: 15 Bar
Temperatur: -20°C – +200°C



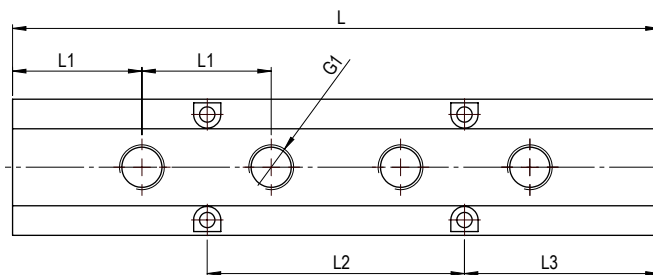
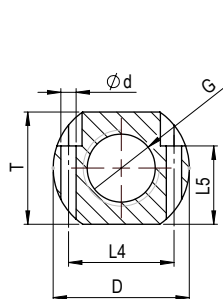
REF	G*	G1**	L	W	T	L1	L2	L3	L4	L5	L6	Ød	Farbe
CLMBAL341404190B	2 x G 3/4 f	4 x G 1/4 f	190	43,5	41,5	38	75,6	57,2	31	30	41,3	4,5	Blau
CLMBAL343804190B	2 x G 3/4 f	4 x G 3/8 f	190	43,5	41,5	38	75,6	57,2	31	30	41,3	4,5	Blau
CLMBAL341404190R	2 x G 3/4 f	4 x G 1/4 f	190	43,5	41,5	38	75,6	57,2	31	30	41,3	4,5	Rot
CLMBAL343804190R	2 x G 3/4 f	4 x G 3/8 f	190	43,5	41,5	38	75,6	57,2	31	30	41,3	4,5	Rot
CLMBAL341406266B	2 x G 3/4 f	6 x G 1/4 f	266	43,5	41,5	38	151,6	57,2	31	30	41,3	4,5	Blau
CLMBAL343806266B	2 x G 3/4 f	6 x G 3/8 f	266	43,5	41,5	38	151,6	57,2	31	30	41,3	4,5	Blau
CLMBAL341406266R	2 x G 3/4 f	6 x G 1/4 f	266	43,5	41,5	38	151,6	57,2	31	30	41,3	4,5	Rot
CLMBAL343806266R	2 x G 3/4 f	6 x G 3/8 f	266	43,5	41,5	38	151,6	57,2	31	30	41,3	4,5	Rot
CLMBAL341408342B	2 x G 3/4 f	8 x G 1/4 f	342	43,5	41,5	38	227,6	57,2	31	30	41,3	4,5	Blau
CLMBAL343808342B	2 x G 3/4 f	8 x G 3/8 f	342	43,5	41,5	38	227,6	57,2	31	30	41,3	4,5	Blau
CLMBAL341408342R	2 x G 3/4 f	8 x G 1/4 f	342	43,5	41,5	38	227,6	57,2	31	30	41,3	4,5	Rot
CLMBAL343808342R	2 x G 3/4 f	8 x G 3/8 f	342	43,5	41,5	38	227,6	57,2	31	30	41,3	4,5	Rot
CLMBAL341410418B	2 x G 3/4 f	10 x G 1/4 f	418	43,5	41,5	38	303,6	57,2	31	30	41,3	4,5	Blau
CLMBAL343810418B	2 x G 3/4 f	10 x G 3/8 f	418	43,5	41,5	38	303,6	57,2	31	30	41,3	4,5	Blau
CLMBAL341410418R	2 x G 3/4 f	10 x G 1/4 f	418	43,5	41,5	38	303,6	57,2	31	30	41,3	4,5	Rot
CLMBAL343810418R	2 x G 3/4 f	10 x G 3/8 f	418	43,5	41,5	38	303,6	57,2	31	30	41,3	4,5	Rot

Note:

- *Gewindeanschluss an der Seite
 - **Gewindeanschluss an der Oberseite
2. Der verwendete Endstopfen R170R3/4 muss separat bestellt werden

KÜHLVERTEILER AUS EDELSTAHL

CLMBSS



Mat.: Edelstahl 1.4301
Drück: 15 Bar
Temperatur: -20°C – +200°C



REF	G*	G1**	L	D	T	L1	L2	L3	L5	L4	Ød
CLMBSS341404190	2 x G 3/4 f	4 x G 1/4 f	190	40	33	38	75,6	57,2	23	31	4,5
CLMBSS343804190	2 x G 3/4 f	4 x G 3/8 f	190	40	33	38	75,6	57,2	23	31	4,5
CLMBSS341406266	2 x G 3/4 f	6 x G 1/4 f	266	40	33	38	151,6	57,2	23	31	4,5
CLMBSS343806266	2 x G 3/4 f	6 x G 3/8 f	266	40	33	38	151,6	57,2	23	31	4,5
CLMBSS341408342	2 x G 3/4 f	8 x G 1/4 f	342	40	33	38	227,6	57,2	23	31	4,5
CLMBSS343808342	2 x G 3/4 f	8 x G 3/8 f	342	40	33	38	227,6	57,2	23	31	4,5
CLMBSS341410418	2 x G 3/4 f	10 x G 1/4 f	418	40	33	38	303,6	57,2	23	31	4,5
CLMBSS343810418	2 x G 3/4 f	10 x G 3/8 f	418	40	33	38	303,6	57,2	23	31	4,5

Note:

- *Gewindeanschluss an der Seite
 - **Gewindeanschluss an der Oberseite
2. Der verwendete Endstopfen R170R3/4 muss separat bestellt werden